

**1. 适用范围 Application:**

本规格书适用 PUM-00011

The specifications apply PUM-00011 use.

**2. 测试环境 Standard test environment:**

2-1	测试环境温度 Environment test	周围温度 20℃ 相对湿度 65%RH 为标准, 如无争议发生可以在下述环境测试: 周围温度 5-30℃ 相对湿度 40-85%RH。 The standard of environment test is the ambient temperature of 20℃ and relative humidity of 65%RH. If no disputes occur, the test can be conducted under the blow circumstance: the ambient temperature of 5~30℃ and relative humidity of 40~85%RH.
2-2	测试姿势 (Position)	水平 (Horizontal)
2-3	额定负载 (Load)	空气压 50KPa (Air pressure 50 KPa)
2-4	使用温度范围 Operation temperature range	-20 ~60° C(Humidity to 30% to 85%RH)
2-5	保存温度范围 Preservation temperature range	-20 ~60° C(Humidity to 30% to 85%RH)

**3 电气特性 Electrical characteristics:**

3-1	额定电压 Rated voltage	DC12.0±0.5V	
3-2	使用电压范围 Operating voltage range:	DC9.6V~14.4V	
3-3	额定电流 Rated current	供电 DC12.0V, 气泵空载工作时的最高电流 < 1350 mA The highest current is less than 1350mA while the pump no load.	≤1350mA Less than 1350mA
3-4	空载流量 No load air flow	DC12V 输入气泵空载时的流量 ≥ 15.0 L/min While pressuring with DC12V the flow rate is required to be more than 15.0 L/min	≥ 15.0 L/min More than 15.0 L/min
3-5	噪音 Noise	下垫 5cm 之海绵, 距噪音计 50cm 之处, 依 DC 12V 之电源充气压力从 0 到 50kpa 之后, 所测得之 dB 值小于 65dB. The underlying 5 cm of the sponge, is apart from the noise	≤ 65dB Less than 65dB

		plan the place of 50 cm, to 5the DC 12 V power supply of air pressure from 0 to 50 kpa after before, the dB value is less than 65 dB.	
3-6	最大真空度 Maximum vocuum	输入 DC12V 之电压吸气压力从 0 到停止减压之最高真空值小于-58KPa. The maximum vocuum value shall be Less than -58KPa while pressurizing with DC 12V tank from 0 till dead-head vocuum value.	<-58kpa) Less than -58 kpa
3-7	再启动电压 Restart voltage	500CC 容器中升压至-40 KPa 时暂停, 再加压到-58KPa 时的最低启动电压。 In pressure -40 KPa input 9.0V voltage ,the pump well be action in one second .	≤DC9. 0V

#### 4 环境试验 Environmental Tests:

4-1	低温放置试验 Low-temperature characteristic	放置在-20℃经 72 小时后, 再取出置于常温(20±5℃)中 2 小时依下列专案测试无异状 3-3, 3-4, 3-5, 3-6, 3-7. Putting the pump in the temperature at negative -20 ℃ for 72 hours;then taking it out and putting it in a room temperature at 20 ± 5℃ for 2 hours,Under this circumstance,running through test 3-3, 3-4, 3-5, 3-6,3-7 and finding out that the pump still performs well.
4-2	高温放置试验 High-temperature characteristic	在 60℃经 72 小时放置后, 在放常温(20±5℃)中 2 小时依下列专案测试无异状 3-3, 3-4,3-5,3-6,3-7 Putting the pump in the temperature at 60℃ for 72 hours; then taking it out and putting it in a room temperature at 20 ± 5 ℃ for 2 hours,Under this circumstance,running through test 3-2,3-3, 3-4, 3-5, 3-6,3-7 and finding out that the pump still performs well.
4-3	高温高湿放置试验 High-temperature & High humidity	在温度 60℃,湿度 95%环境中经 72 小时取出置于常温(20±5℃)中 2 小时依下列专案测试无异状 3-3, 3-4, 3-5, 3-6,3-7, 3-8. Putting the pump in the temperature at 60℃ and the humidity at 95% for 72 hours;then taking it out and putting it in a room temperature at 20 ± 5 ℃ for 2 hours.Under this circumstance,running through test 3-3, 3-4, 3-5, 3-6,3-7, 3-8 and finding out that the pump still performs well.
4-4	温湿度循环放置测试 Temperature & humidity cycle test	在经过 12 次的温湿度循环测试后:-20℃* 2Hr → +25℃* 1Hr →+60℃ 85%RH* 2Hr →+25℃*1Hr,需维持相同的性能.依下列专案测试无异状 3-3, 3-4, 3-5, 3-6,3-7, 3-8.After doing the temperature and humidity cycle test,-20℃* 2Hr → +25℃* 1Hr→

## Specifications

版本号 Version number: A/0

		+60℃ 85%RH* 2Hr → +25℃ *1Hr,for twelve times,the pump shall still perform the same functions proved by running through test 3-3, 3-4, 3-5, 3-6,3-7.
4-5	寿命试验 Life test	500CC 气缸, DC12V 输入, 气泵充气 15 秒后停止, 排气 15 秒为一次, 共进行 50000 次, 累计时间 500 小时以上。 500 CC cylinder, DC12V input, air pump inflatable 15 seconds after stop, exhaust 15 seconds for a time, a total of 50000 times, total time 500 hours.

## 5 特殊环境测试 Thermal test performance:

在经过发下 5-1 和 5-2 项目之特殊环境测试后, 要产品须可满足项目 3-3 至 3-8 之基本性能。

After the pump has been tested through test 5-1 and 5-2, it must be suitable the basic performance required by item 3-2 to 3-8.

5-1	低温环境测试 Low-temperature environment test	在温度 0℃ 经五小时后,在此温度下依下列专案测试无异状, 3-3, 3-4, 3-5, 3-6,3-7. Under a temperature of 0℃ for 5 hours, then examining the pump by test 3-3, 3-4, 3-5, 3-6,3-7 and finding out it still perform well.
5-2	高温环境测试 High-temperature environment test	在温度 50℃ 经五小时后,在此温度下依下列专案测试无异状, 3-3, 3-4, 3-5, 3-6,3-7. Under a temperature of 50℃ for 5 hours, then examining the pump by test 3-3, 3-4, 3-5, 3-6,3-7 and finding out it still perform well.

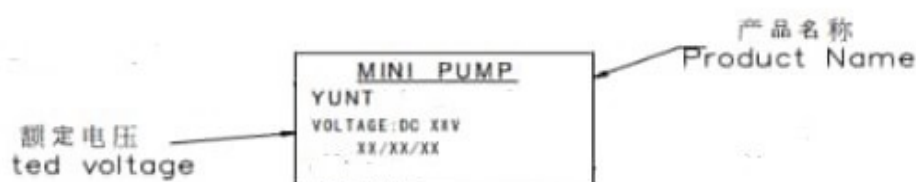
## 6 其它 Others:

6-1	端子强度 The lead tension	以 0.5 公斤法码与端子平行负载无异常者。 Hanging a 0.5 Kg static load on the terminal of the pump will not cause a damage on the pump.
6-2	落下实验 Fall test	使用标准的包装方式,在水泥地上将其从 50cm 的高度分别从正面,侧面,及边角落下,其性能及结构需无异常。 Basic performance and the struture shall not be defected after following test;With a standard packaging conditions,then dropping it at the front,side,and edges part from the height of 50 cm to the concrete floor.
6-3	外观 Appearance	产品无不适当的外观和刮伤,脏污…等。 The appearances of the pump shall not contain cracks and impurities.
6-4	异常试验	以 DC12V 连续 8 小时通电无燃烧,发烟现象。

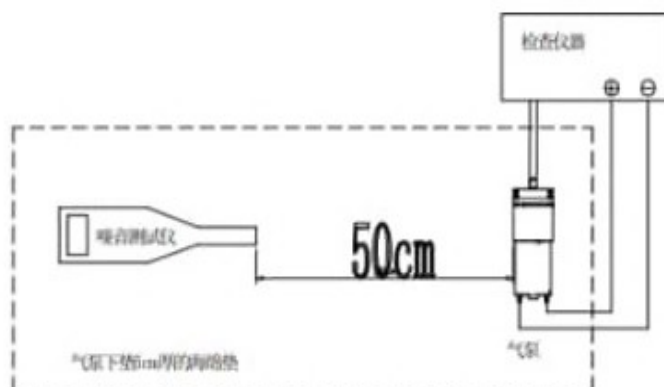
Specifications

	Unusual test	There is no burning and smoking occurrence while the power is on with DC 12V for 8 hours continuously.
6-5	焊锡要求	马达端子焊锡作业需在焊锡温度 380℃下,3 秒内操作完成. Motor terminal for Soldering process the heat temp. is controlled by 380℃,and operating time is for 3 sec only.

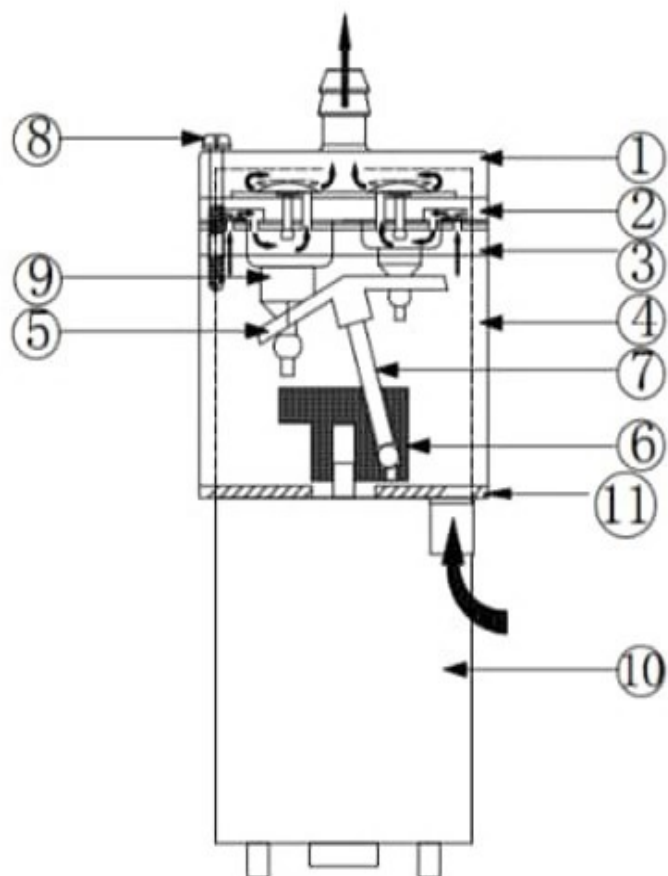
7 标签内容 Labels:



8 噪音测试线路图 Noise test circuit diagram:



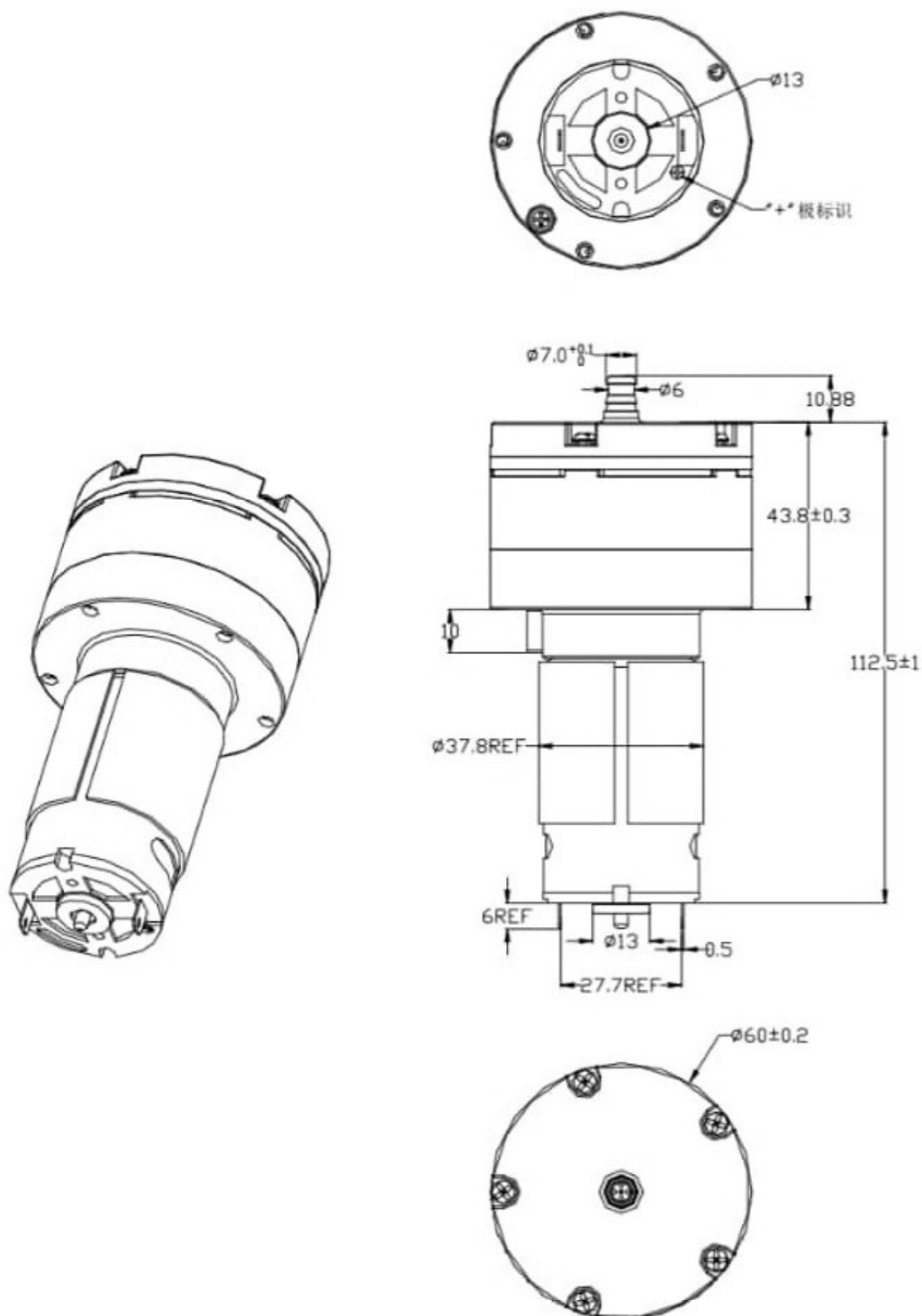
9 结构图 Structural drawing:



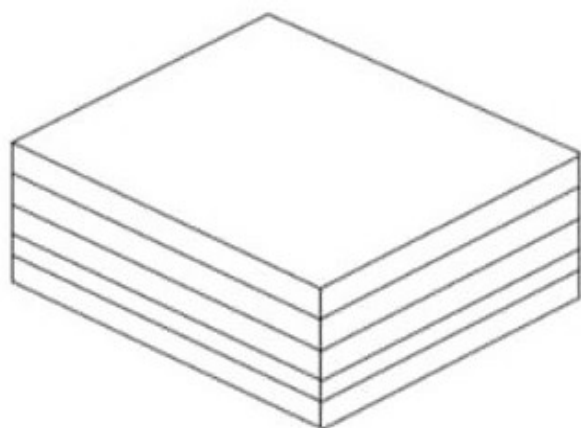
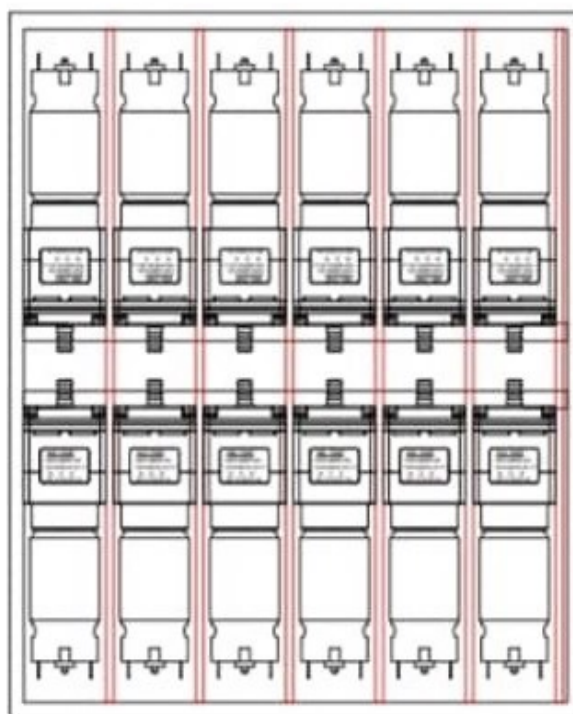
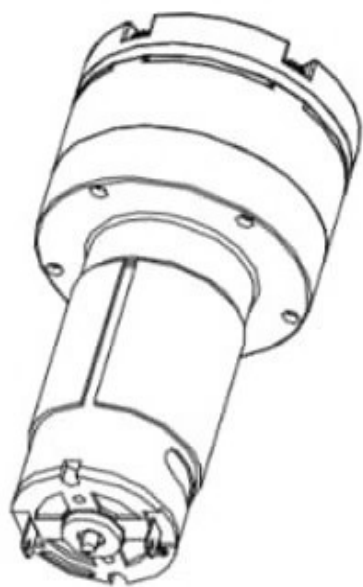
10 材料表 Material list:

号 码 NO.	名 称 NAME.	材 料 MATERIAL.
1	塑胶 B1	PLASTIC
2	塑胶 B2	PLASTIC
3	塑胶 B3	PLASTIC
4	塑胶 B4	PLASTIC
5	塑胶 B5	PLASTIC
6	塑胶 B6	PLASTIC
7	钢 针	STEEL
8	螺 丝	SUS1006
9	橡 胶	RUBBER
10	马 达	555 电机
11	橡 胶	RUBBER

### 11.成品外形图 Finish ed Outline

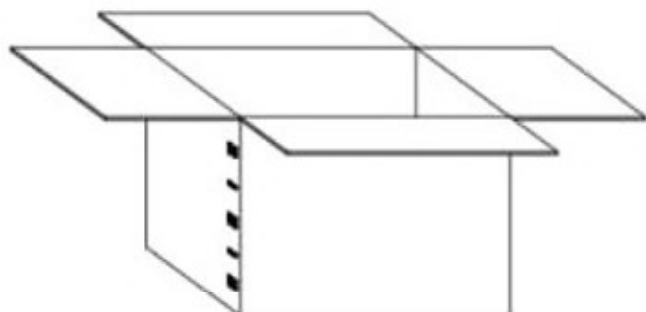


## 12. 包装图 Packaging



每层 12个  
Each layer 12 pcs

每箱5层 共60个  
Each box with five layers of 60pcs



TYPE: MICRO.PUMP  
P.O.NO:  
QTY: PCS  
GRS.WT: KG  
NET.WT: KG

